

# HIGH PERFORMANCE & SPORT REHAB



**PRODUCT LIST 4.0**

---

VAT NOT INCLUDED

VALID FROM SEPT 1, 2019

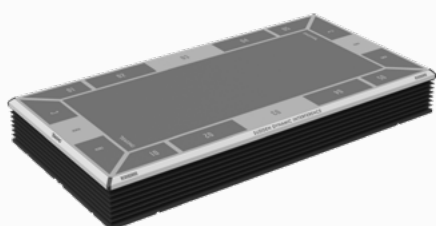
REAX RUN



REAX  
R U N

PAGE HP-05

REAX BOARD



REAX  
B O A R D

PAGE HP-06

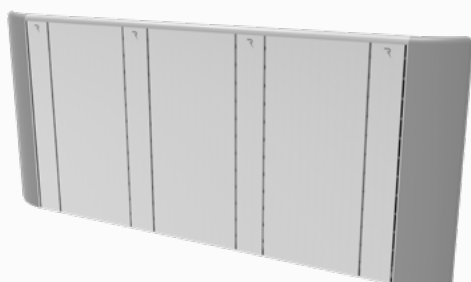
REAX LIGHTS



REAX  
L I G H T S

PAGE HP-08

REAX STORAGES



REAX  
S T O R A G E S

PAGE HP-24



REAX SERVICES  
& COURSES

PAGE **HP-30**



PROGRESSIVE  
ITEM CODES

PAGE **HP-32**



## REAX RUN - PRO RX1408

FRONTAL INCLINE: +/-11% LATERAL INCLINE: +/-14%  
MAX SPEED: 25KM/H  
OPTIONAL TABLET CONTROL



WORKING AREA	TECHNICAL SPECS
Length (cm   in)	Length (cm   in)
262,00   103,15	242,00   95,28
Width (cm   in)	Height (cm   in)
137,00   53,94	166,00   65,35
	Width (cm   in)
	117,00   46,06
	Weight (kg   lbs)
	600,00   1323,00

POWER INFORMATION	SHIPPING INFORMATION
Power Supply	Packages   Type
240V - 50Hz	2   PALLET
Power Consumption	Total Volume (m³)
4KW/ 16A	4,367
	Total Weight (kg   lbs)
	680,00   1499,14
	MOQ
	1

## TABLET RX1409

REAX RUN APP INCLUDED



TECHNICAL SPECS	SHIPPING INFORMATION
Length (cm   in)	Packages   Type
NA   NA	1   CARTON BOX
Height (cm   in)	Total Volume (m³)
NA   NA	0,002
Width (cm   in)	Total Weight (kg   lbs)
NA   NA	1,00   2,20
Weight (kg   lbs)	MOQ
NA   NA	1

## UNIVERSAL TABLET STATION RX1661

TABLET HOLDER AND CHARGER  
TABLET NEEDED TO RUN THE REAX RUN APP

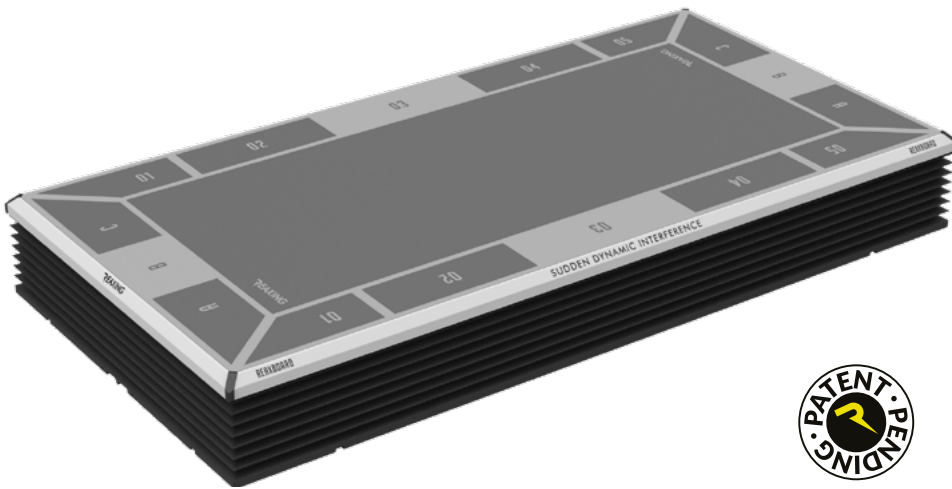


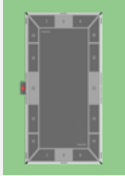
POWER INFORMATION	TECHNICAL SPECS	SHIPPING INFORMATION
Power Supply	Depth (cm   in)	Packages   Type
110-240V/50-60Hz	43,00   16,39	1   CARTON BOX
Power Consumption	Height (cm   in)	Total Volume (m³)
100W   5A	139,00   54,72	0,293
	Width (cm   in)	Total Weight (kg   lbs)
	50,00   19,69	25,00   57,32
	Weight (kg   lbs)	MOQ
	24,00   52,91	1

REAX BOARD 250

RX1410

FRONTAL INCLINE: +/- 11% LATERAL INCLINE: +/- 14%  
TABLET NEEDED TO RUN THE REAX BOARD APP



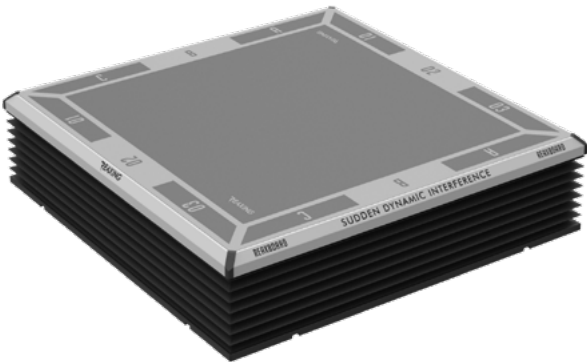
WORKING AREA	TECHNICAL SPECS
Length (cm   in)	Length (cm   in)
375,00   147,64	250,00   98,43
Width (cm   in)	Height (cm   in)
250,00   98,43	33,00   12,99
	Width (cm   in)
	125,00   49,21
	Weight (kg   lbs)
	440,00   970,03

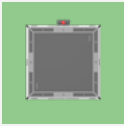
POWER INFORMATION	SHIPPING INFORMATION
Power Supply	Packages   Type
110-240V/50-60Hz	1   WOODEN BOX 5   CARTON BOX
Power Consumption	Total Volume (m³)
2KW/ 10A	1,830
	Total Weight (kg   lbs)
	520,00   1146,40
	MOQ
	1

REAX BOARD 125

RX1412

FRONTAL INCLINE: +/- 11% LATERAL INCLINE: +/- 14%  
TABLET NEEDED TO RUN THE REAX BOARD APP



WORKING AREA	TECHNICAL SPECS
Length (cm   in)	Length (cm   in)
250,00   98,43	125,00   49,21
Width (cm   in)	Height (cm   in)
250,00   98,43	33,00   12,99
	Width (cm   in)
	125,00   49,21
	Weight (kg   lbs)

POWER INFORMATION	SHIPPING INFORMATION
Power Supply	Packages   Type
110-240V/50-60Hz	1   WOODEN BOX
Power Consumption	Total Volume (m³)
2KW/ 10A	1,100
	Total Weight (kg   lbs)
	380,00   837,76
	MOQ
	1

TABLET

RX1414

REAX BOARD APP INCLUDED



TECHNICAL SPECS	SHIPPING INFORMATION
Length (cm   in)	Packages   Type
NA   NA	1   CARTON BOX
Height (cm   in)	Total Volume (m³)
NA   NA	0,002
Width (cm   in)	Total Weight (kg   lbs)
NA   NA	1,00   2,20
Weight (kg   lbs)	MOQ
NA   NA	1

REAX BOARD - CONTROL STATION - 4

RX1641

REAX BOARD APP INCLUDED  
FLOOR FIXING NEEDED



POWER INFORMATION	TECHNICAL SPECS	SHIPPING INFORMATION
Power Supply	Depth (cm   in)	Packages   Type
110-240V/50-60Hz	43,00   16,39	1   CARTON BOX
Power Consumption	Height (cm   in)	Total Volume (m³)
100W   5A	139,00   54,72	0,293
	Width (cm   in)	Total Weight (kg   lbs)
	50,00   19,69	28,00   63,93
	Weight (kg   lbs)	MOQ
	27,00   59,52	1

UNIVERSAL TABLET STATION

RX1661

TABLET HOLDER AND CHARGER  
TABLET NEEDED TO RUN THE REAX BOARD APP



POWER INFORMATION	TECHNICAL SPECS	SHIPPING INFORMATION
Power Supply	Depth (cm   in)	Packages   Type
110-240V/50-60Hz	43,00   16,39	1   CARTON BOX
Power Consumption	Height (cm   in)	Total Volume (m³)
100W   5A	139,00   54,72	0,293
	Width (cm   in)	Total Weight (kg   lbs)
	50,00   19,69	25,00   57,32
	Weight (kg   lbs)	MOQ
	24,00   52,91	1

SOFT MAT FOR BOARD 250

RX1411

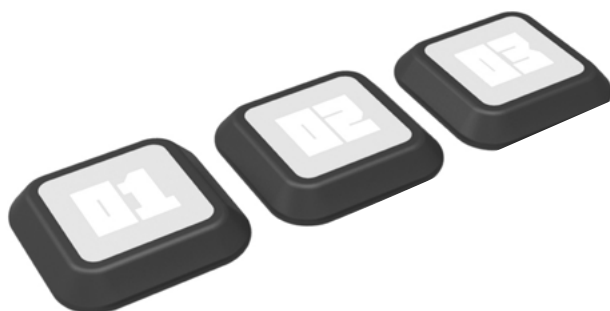
SUITABLE FOR REAX BOARD 250



TECHNICAL SPECS	SHIPPING INFORMATION
Length (cm   in)	Packages   Type
198,00   77,95	1   PLURIBALL
Height (cm   in)	Total Volume (m³)
3,00   1,18	0,050
Width (cm   in)	Total Weight (kg   lbs)
80,00   31,50	9,00   19,84
Weight (kg   lbs)	MOQ
8,00   17,64	1

## REAX LIGHTS - PERSONAL 3 RX1638-BK

TABLET NEEDED TO RUN THE REAX LIGHTS APP



INCLUDED ITEMS:

3 X BLUETOOTH SATELLITES

1 X CHARGER



### WORKING RANGE

Ø (cm | in)

10,00 | 32,81

### TECHNICAL SPECS

Length (cm | in)

NA | NA

Height (cm | in)

NA | NA

Width (cm | in)

NA | NA

Weight (kg | lbs)

NA | NA

### POWER INFORMATION

Power Supply

110-240V/50-60Hz

Power Consumption

60W/ 3A

### SHIPPING INFORMATION

Packages | Type

1 | CARTON BOX

Total Volume (m³)

0,030

Total Weight (kg | lbs)

2,00 | 4,41

MOQ

1

## TABLET RX1397

REAX LIGHTS APP INCLUDED



### TECHNICAL SPECS

Length (cm | in)

NA | NA

Height (cm | in)

NA | NA

Width (cm | in)

NA | NA

Weight (kg | lbs)

NA | NA

### SHIPPING INFORMATION

Packages | Type

1 | CARTON BOX

Total Volume (m³)

0,002

Total Weight (kg | lbs)

1,00 | 2,20

MOQ

1

## UNIVERSAL TABLET STATION RX1661

TABLET HOLDER AND CHARGER  
TABLET NEEDED TO RUN THE REAX LIGHTS APP



### POWER INFORMATION

Power Supply

110-240V/50-60Hz

Power Consumption

100W | 5A

### TECHNICAL SPECS

Depth (cm | in)

43,00 | 16,39

Height (cm | in)

139,00 | 54,72

Width (cm | in)

50,00 | 19,69

Weight (kg | lbs)

24,00 | 52,91

### SHIPPING INFORMATION

Packages | Type

1 | CARTON BOX

Total Volume (m³)

0,293

Total Weight (kg | lbs)

25,00 | 57,32

MOQ

1



## REAX LIGHTS - PERSONAL 6 RX1273-BK

TABLET NEEDED TO RUN THE REAX LIGHTS APP



INCLUDED ITEMS:

6 X BLUETOOTH SATELLITES

1 X CHARGER



### WORKING RANGE

Ø (cm | in)

10,00 | 32,81

### TECHNICAL SPECS

Length (cm | in)

NA | NA

Height (cm | in)

NA | NA

Width (cm | in)

NA | NA

Weight (kg | lbs)

NA | NA

### POWER INFORMATION

Power Supply

110-240V/50-60Hz

Power Consumption

60W / 3A

### SHIPPING INFORMATION

Packages | Type

1 | CARTON BOX

Total Volume (m³)

0,030

Total Weight (kg | lbs)

5,00 | 11,02

MOQ

1

## TABLET RX1397

REAX LIGHTS APP INCLUDED



### TECHNICAL SPECS

Length (cm | in)

NA | NA

Height (cm | in)

NA | NA

Width (cm | in)

NA | NA

Weight (kg | lbs)

NA | NA

### SHIPPING INFORMATION

Packages | Type

1 | CARTON BOX

Total Volume (m³)

0,002

Total Weight (kg | lbs)

1,00 | 2,20

MOQ

1

## UNIVERSAL TABLET STATION RX1661

TABLET HOLDER AND CHARGER  
TABLET NEEDED TO RUN THE REAX LIGHTS APP



### POWER INFORMATION

Power Supply

110-240V/50-60Hz

Power Consumption

100W | 5A

### TECHNICAL SPECS

Depth (cm | in)

43,00 | 16,39

Height (cm | in)

139,00 | 54,72

Width (cm | in)

50,00 | 19,69

Weight (kg | lbs)

24,00 | 52,91

### SHIPPING INFORMATION

Packages | Type

1 | CARTON BOX

Total Volume (m³)

0,293

Total Weight (kg | lbs)

25,00 | 57,32

MOQ

1

## REAX LIGHTS - PROFESSIONAL 6 - PT RX1662-BK

TABLET NEEDED TO RUN THE REAX LIGHTS APP



INCLUDED ITEMS:

6 X WI-FI SATELLITES

1 X CHARGER

1 X MOBILE ROUTER



### WORKING RANGE

Ø (m | FT)

50,00 | 82,02

### TECHNICAL SPECS

Length (cm | in)

NA | NA

Height (cm | in)

NA | NA

Width (cm | in)

NA | NA

Weight (kg | lbs)

NA | NA

### POWER INFORMATION

Power Supply

110-240V/50-60Hz

Power Consumption

60W / 3A

### SHIPPING INFORMATION

Packages | Type

1 | CARTON BOX

Total Volume (m³)

0,030

Total Weight (kg | lbs)

7,00 | 15,43

MOQ

1

## TABLET RX1397

REAX LIGHTS APP INCLUDED



### TECHNICAL SPECS

Length (cm | in)

NA | NA

Height (cm | in)

NA | NA

Width (cm | in)

NA | NA

Weight (kg | lbs)

NA | NA

### SHIPPING INFORMATION

Packages | Type

1 | CARTON BOX

Total Volume (m³)

0,002

Total Weight (kg | lbs)

1,00 | 2,20

MOQ

1

## UNIVERSAL TABLET STATION RX1661

TABLET HOLDER AND CHARGER  
TABLET NEEDED TO RUN THE REAX LIGHTS APP



### POWER INFORMATION

Power Supply

110-240V/50-60Hz

Power Consumption

100W | 5A

### TECHNICAL SPECS

Depth (cm | in)

43,00 | 16,39

Height (cm | in)

139,00 | 54,72

Width (cm | in)

50,00 | 19,69

Weight (kg | lbs)

24,00 | 52,91

### SHIPPING INFORMATION

Packages | Type

1 | CARTON BOX

Total Volume (m³)

0,293

Total Weight (kg | lbs)

25,00 | 57,32

MOQ

1

## REAX LIGHTS -PROFESSIONAL 6 - STUDIO RX1005-BK

TABLET NEEDED TO RUN THE REAX LIGHTS APP



### INCLUDED ITEMS:

6 X WI-FI SATELLITES



1 X CHARGER



1 X WIRED ROUTER



### WORKING RANGE

Ø (m | FT)

50,00 | 82,02

### TECHNICAL SPECS

Length (cm | in)

NA | NA

Height (cm | in)

NA | NA

Width (cm | in)

NA | NA

Weight (kg | lbs)

NA | NA

### POWER INFORMATION

Power Supply

110-240V/50-60Hz

Power Consumption

60W / 3A

### SHIPPING INFORMATION

Packages | Type

1 | CARTON BOX

Total Volume (m³)

0,030

Total Weight (kg | lbs)

7,00 | 15,43

MOQ

1

## TABLET RX1397

REAX LIGHTS APP INCLUDED



### TECHNICAL SPECS

Length (cm | in)

NA | NA

Height (cm | in)

NA | NA

Width (cm | in)

NA | NA

Weight (kg | lbs)

NA | NA

### SHIPPING INFORMATION

Packages | Type

1 | CARTON BOX

Total Volume (m³)

0,002

Total Weight (kg | lbs)

1,00 | 2,20

MOQ

1

## UNIVERSAL TABLET STATION RX1661

TABLET HOLDER AND CHARGER  
TABLET NEEDED TO RUN THE REAX LIGHTS APP



### POWER INFORMATION

Power Supply

110-240V/50-60Hz

Power Consumption

100W | 5A

### TECHNICAL SPECS

Depth (cm | in)

43,00 | 16,39

Height (cm | in)

139,00 | 54,72

Width (cm | in)

50,00 | 19,69

Weight (kg | lbs)

24,00 | 52,91

### SHIPPING INFORMATION

Packages | Type

1 | CARTON BOX

Total Volume (m³)

0,293

Total Weight (kg | lbs)

25,00 | 57,32

MOQ

1

## REAX LIGHTS - PROFESSIONAL 12 - PT RX1663-BK

TABLET NEEDED TO RUN THE REAX LIGHTS APP

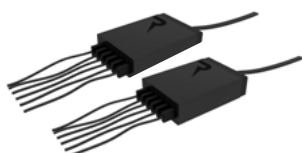


### INCLUDED ITEMS:

12 X WI-FI SATELLITES



2 X CHARGERS



1 X MOBILE ROUTER



### WORKING RANGE

Ø (m | FT)

50,00 | 82,02

### TECHNICAL SPECS

Length (cm | in)

NA | NA

Height (cm | in)

NA | NA

Width (cm | in)

NA | NA

Weight (kg | lbs)

NA | NA

### POWER INFORMATION

Power Supply

110-240V/50-60Hz

Power Consumption

60W / 5A

### SHIPPING INFORMATION

Packages | Type

1 | CARTON BOX

Total Volume (m³)

0,050

Total Weight (kg | lbs)

9,00 | 19,84

MOQ

1

## TABLET RX1397

REAX LIGHTS APP INCLUDED



### TECHNICAL SPECS

Length (cm | in)

NA | NA

Height (cm | in)

NA | NA

Width (cm | in)

NA | NA

Weight (kg | lbs)

NA | NA

### SHIPPING INFORMATION

Packages | Type

1 | CARTON BOX

Total Volume (m³)

0,002

Total Weight (kg | lbs)

1,00 | 2,20

MOQ

1

## UNIVERSAL TABLET STATION RX1661

TABLET HOLDER AND CHARGER  
TABLET NEEDED TO RUN THE REAX LIGHTS APP



### POWER INFORMATION

Power Supply

110-240V/50-60Hz

Power Consumption

100W | 5A

### TECHNICAL SPECS

Depth (cm | in)

43,00 | 16,39

Height (cm | in)

139,00 | 54,72

Width (cm | in)

50,00 | 19,69

Weight (kg | lbs)

24,00 | 52,91

### SHIPPING INFORMATION

Packages | Type

1 | CARTON BOX

Total Volume (m³)

0,293

Total Weight (kg | lbs)

25,00 | 57,32

MOQ

1

## REAX LIGHTS -PROFESSIONAL 12 - STUDIO RX1006-BK

TABLET NEEDED TO RUN THE REAX LIGHTS APP

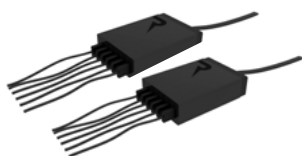


### INCLUDED ITEMS:

12 X WI-FI SATELLITES



2 X CHARGERS



1 X WIRED ROUTER



### WORKING RANGE

Ø (m | FT)

50,00 | 82,02

### TECHNICAL SPECS

Length (cm | in)

NA | NA

Height (cm | in)

NA | NA

Width (cm | in)

NA | NA

Weight (kg | lbs)

NA | NA

### POWER INFORMATION

Power Supply

110-240V/50-60Hz

Power Consumption

60W / 5A

### SHIPPING INFORMATION

Packages | Type

1 | CARTON BOX

Total Volume (m³)

0,050

Total Weight (kg | lbs)

9,00 | 19,84

MOQ

1

## TABLET RX1397

REAX LIGHTS APP INCLUDED



### TECHNICAL SPECS

Length (cm | in)

NA | NA

Height (cm | in)

NA | NA

Width (cm | in)

NA | NA

Weight (kg | lbs)

NA | NA

### SHIPPING INFORMATION

Packages | Type

1 | CARTON BOX

Total Volume (m³)

0,002

Total Weight (kg | lbs)

1,00 | 2,20

MOQ

1

## UNIVERSAL TABLET STATION RX1661

TABLET HOLDER AND CHARGER  
TABLET NEEDED TO RUN THE REAX LIGHTS APP



### POWER INFORMATION

Power Supply

110-240V/50-60Hz

Power Consumption

100W | 5A

### TECHNICAL SPECS

Depth (cm | in)

43,00 | 16,39

Height (cm | in)

139,00 | 54,72

Width (cm | in)

50,00 | 19,69

Weight (kg | lbs)

24,00 | 52,91

### SHIPPING INFORMATION

Packages | Type

1 | CARTON BOX

Total Volume (m³)

0,293

Total Weight (kg | lbs)

25,00 | 57,32

MOQ

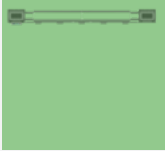
1

REAX STATION - 350 EXECUTIVE

RX1667

FLOOR FIXING NEEDED



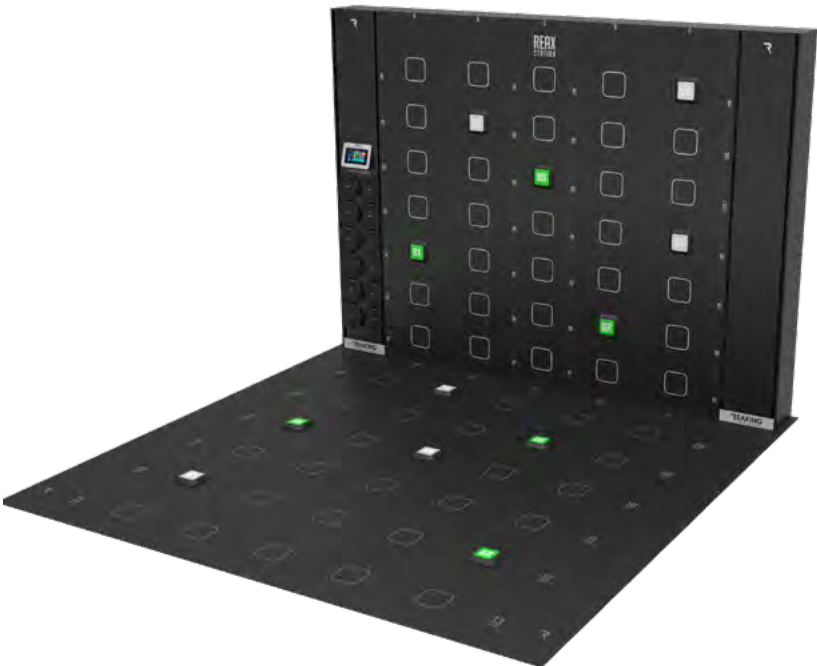
WORKING AREA	TECHNICAL SPECS
Length (cm   in)	Depth (cm   in)
355,00   139,76	30,00   11,81
Width (cm   in)	Height (cm   in)
355,00   139,76	250,00   98,43
	Width (cm   in)
	340,00   133,86
	Weight (kg   lbs)
	275,00   606,27

POWER INFORMATION	SHIPPING INFORMATION
Power Supply	Packages   Type
110-240V/50-60Hz	7   CARTON BOX
Power Consumption	Total Volume (m³)
130W	1,300
	Total Weight (kg   lbs)
	282,00   621,70
	MOQ
	1

REAX STATION - 350 EXECUTIVE - WITH FLOOR

RX1668

FLOOR FIXING NEEDED



WORKING AREA	TECHNICAL SPECS
Length (cm   in)	Depth (cm   in)
355,00   139,76	355,00   139,76
Width (cm   in)	Height (cm   in)
355,00   139,76	250,00   98,43
	Width (cm   in)
	350,00   137,80
	Weight (kg   lbs)
	381,00   839,96


POWER INFORMATION	SHIPPING INFORMATION
Power Supply	Packages   Type
110-240V/50-60Hz	7   CARTON BOX 1   CARTON BOX
Power Consumption	Total Volume (m³)
130W	1,500
	Total Weight (kg   lbs)
	398,00   877,44
	MOQ
	1



REAX STATION - 350 PREMIUM  
RX1669

FLOOR FIXING NEEDED

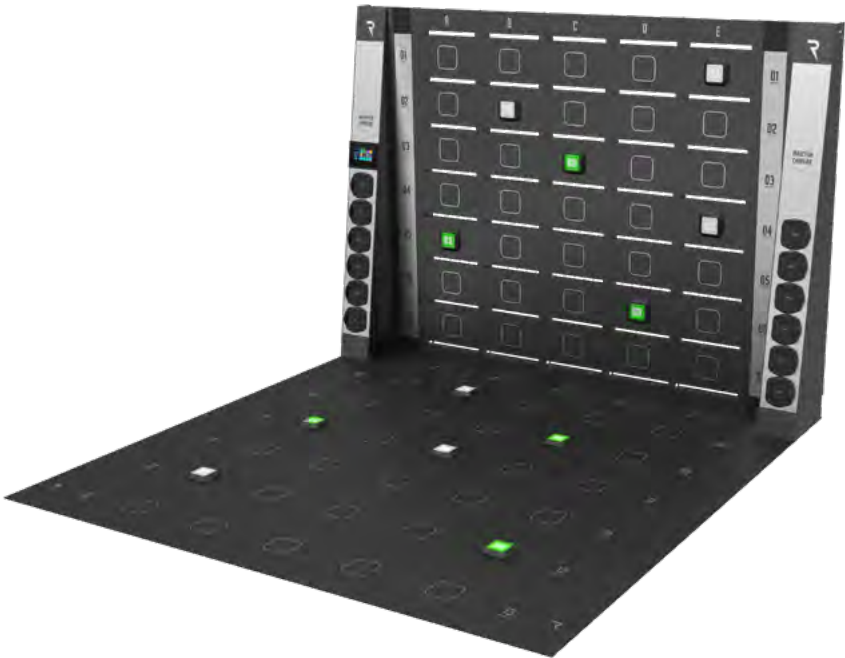


WORKING AREA	TECHNICAL SPECS
Length (cm   in)	Depth (cm   in)
355,00   139,76	52,00   20,47
Width (cm   in)	Height (cm   in)
355,00   139,76	250,00   98,43
	Width (cm   in)
	350,00   137,80
	Weight (kg   lbs)
	462,00   1018,53

POWER INFORMATION	SHIPPING INFORMATION
Power Supply	Packages   Type
110-240V/50-60Hz	12   CARTON BOX
Power Consumption	Total Volume (m³)
130W	1,700
	Total Weight (kg   lbs)
	473,00   1042,79
	MOQ
	1

REAX STATION - 350 PREMIUM - WITH FLOOR  
RX1670

FLOOR FIXING NEEDED



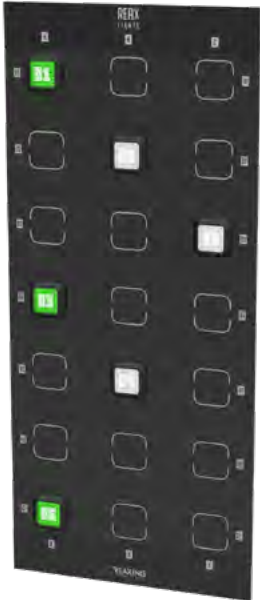
WORKING AREA	TECHNICAL SPECS
Length (cm   in)	Depth (cm   in)
355,00   139,76	355,00   139,76
Width (cm   in)	Height (cm   in)
355,00   139,76	250,00   98,43
	Width (cm   in)
	350,00   137,80
	Weight (kg   lbs)
	568,00   1252,22

POWER INFORMATION	SHIPPING INFORMATION
Power Supply	Packages   Type
110-240V/50-60Hz	12   CARTON BOX 1   CARTON BOX
Power Consumption	Total Volume (m³)
130W	1,900
	Total Weight (kg   lbs)
	589,00   1298,52
	MOQ
	1

IRON PANEL - 110

RX1402

SATELLITES NOT INCLUDED  
WALL FIXING NEEDED



TECHNICAL  
SPECS

Depth (cm | in)

3 | 1,18

Height (cm | in)

250,00 | 98,43

Width (cm | in)

110,00 | 43,31

Weight (kg | lbs)

20,00 | 44,09

SHIPPING  
INFORMATION

Packages | Type

1 | CARTON BOX

Total Volume (m³)

0,250

Total Weight (kg | lbs)

21,00 | 46,30

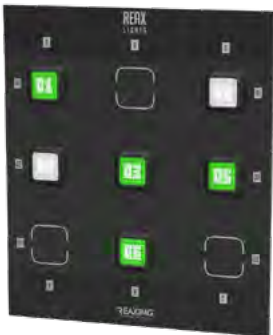
MOQ

1

IRON PANEL - 110-MINI

RX1401

SATELLITES NOT INCLUDED  
WALL FIXING NEEDED



TECHNICAL  
SPECS

Depth (cm | in)

3 | 1,18

Height (cm | in)

125,00 | 49,21

Width (cm | in)

110,00 | 43,31

Weight (kg | lbs)

10,00 | 22,05

SHIPPING  
INFORMATION

Packages | Type

1 | CARTON BOX

Total Volume (m³)

0,120

Total Weight (kg | lbs)

11,00 | 24,25

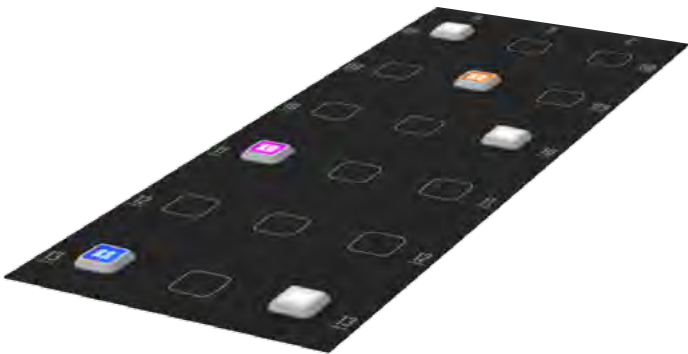
MOQ

1



FLOOR PANEL - 110  
RX1664

SATELLITES NOT INCLUDED



TECHNICAL  
SPECS

Depth (cm | in)  
305,00 | 120,08

Height (cm | in)  
0,70 | 0,28

Width (cm | in)  
110,00 | 43,31

Weight (kg | lbs)  
29,00 | 63,93

SHIPPING  
INFORMATION

Packages | Type  
1 | PALLET

Total Volume (m³)  
0,300

Total Weight (kg | lbs)  
40,00 | 88,18

MOQ  
1

INDUCTION CHARGER - BASIC  
RX1665

REAX LIGHTS APP INCLUDED  
WALL FIXING NEEDED



POWER  
INFORMATION

Power Supply  
110-240V/50-60Hz

Power Consumption  
130W

TECHNICAL  
SPECS

Depth (cm | in)  
10 | 3,94

Height (cm | in)  
250,00 | 98,43

Width (cm | in)  
60,00 | 23,62

Weight (kg | lbs)  
59,00 | 130,07

SHIPPING  
INFORMATION

Packages | Type  
1 | CARTON BOX

Total Volume (m³)  
2,000

Total Weight (kg | lbs)  
61,00 | 134,48

MOQ  
1

INDUCTION CHARGER - PRO  
RX1666

REAX LIGHTS APP INCLUDED  
WALL FIXING NEEDED



POWER  
INFORMATION

Power Supply  
110-240V/50-60Hz

Power Consumption  
130W

TECHNICAL  
SPECS

Depth (cm | in)  
10 | 3,94

Height (cm | in)  
250,00 | 98,43

Width (cm | in)  
60,00 | 23,62

Weight (kg | lbs)  
60,00 | 132,28

SHIPPING  
INFORMATION

Packages | Type  
1 | CARTON BOX

Total Volume (m³)  
2,000

Total Weight (kg | lbs)  
62,00 | 136,69

MOQ  
1

## CONFIGURATION 1

THE CONFIGURATION SHOWS:

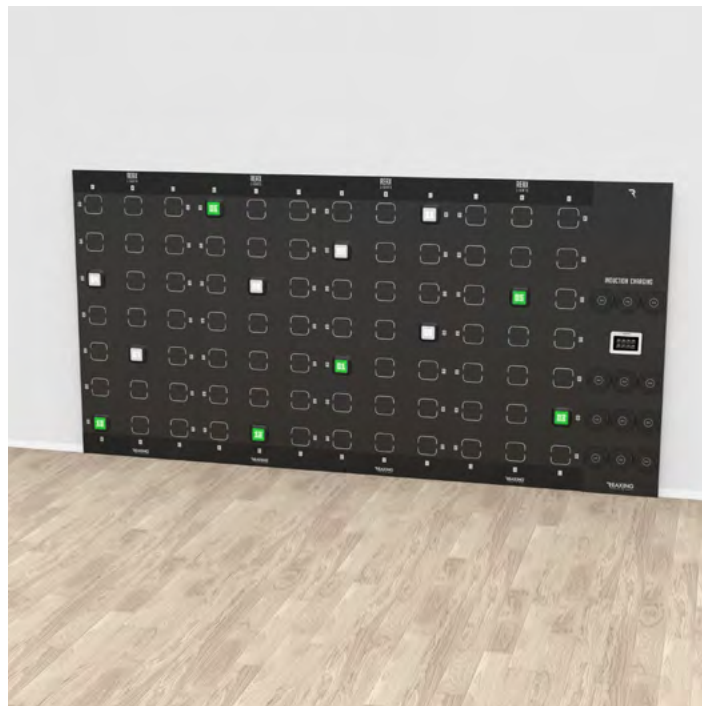
1X RX1666 - INDUCTION CHARGER - PRO  
2X RX1402 - IRON PANEL 110



## CONFIGURATION 2

THE CONFIGURATION SHOWS:

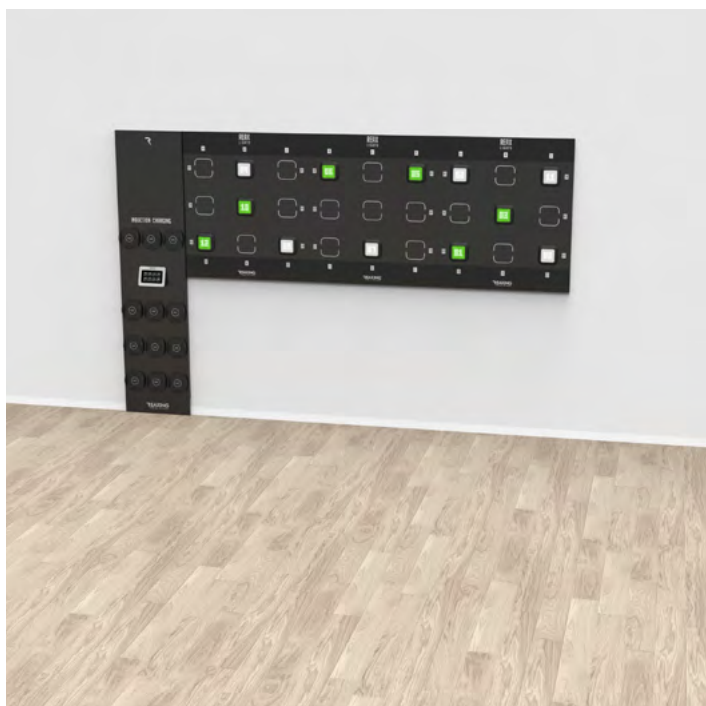
1X RX1666 - INDUCTION CHARGER - PRO  
4X RX1402 - IRON PANEL 110



## CONFIGURATION 3

THE CONFIGURATION SHOWS:

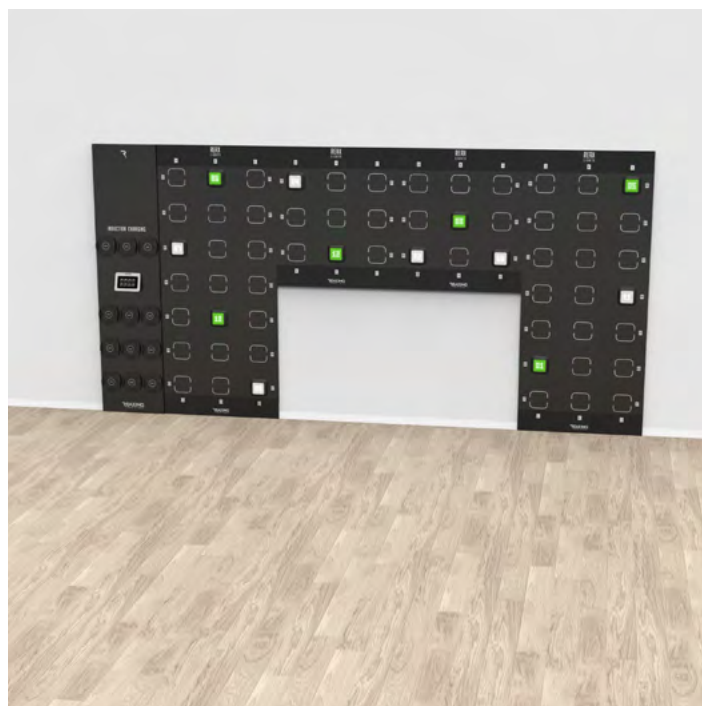
1X RX1666 - INDUCTION CHARGER - PRO  
3X RX1401 - IRON PANEL 110 MINI



## CONFIGURATION 4

THE CONFIGURATION SHOWS:

1X RX1666 - INDUCTION CHARGER - PRO  
2X RX1401 - IRON PANEL 110 MINI  
2X RX1402 - IRON PANEL 110



## CONFIGURATION 5

THE CONFIGURATION SHOWS:

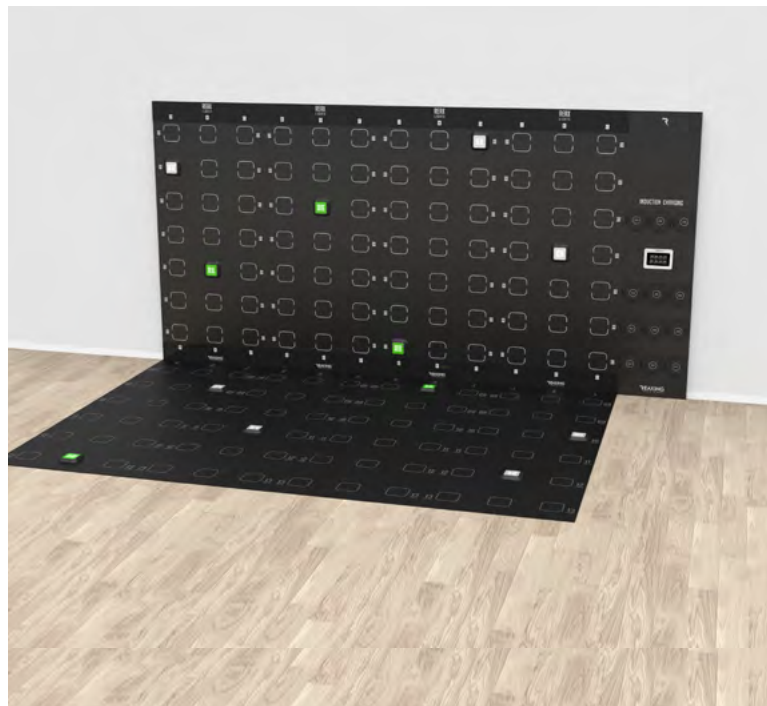
1X RX1666 - INDUCTION CHARGER - PRO  
2X RX1402 - IRON PANEL 110  
2X RX1664 - I-FLOOR PANEL 110



## CONFIGURATION 6

THE CONFIGURATION SHOWS:

1X RX1666 - INDUCTION CHARGER - PRO  
4X RX1402 - IRON PANEL 110  
4X RX1664 - I-FLOOR PANEL 110



## CONFIGURATION 7

THE CONFIGURATION SHOWS:

1X RX1666 - INDUCTION CHARGER - PRO  
3X RX1401 - IRON PANEL 110 MINI  
3X RX1664 - I-FLOOR PANEL 110



## CONFIGURATION 8

THE CONFIGURATION SHOWS:

1X RX1666 - INDUCTION CHARGER - PRO  
2X RX1401 - IRON PANEL 110 MINI  
2X RX1402 - IRON PANEL 110  
4X RX1664 - I-FLOOR PANEL 110





REAX APPAREL (L/XL)  
RX1286-BK

SATELLITES NOT INCLUDED



TECHNICAL SPECS	SHIPPING INFORMATION
Length (cm   in)	Packages   Type
NA   NA	1   CARTON BOX
Height (cm   in)	Total Volume (m³)
NA   NA	0,012
Width (cm   in)	Total Weight (kg   lbs)
NA   NA	3,00   6,61
Weight (kg   lbs)	MOQ
2,00   4,41	1

REAX APPAREL (S/M)  
RX1286-GY

SATELLITES NOT INCLUDED



TECHNICAL SPECS	SHIPPING INFORMATION
Length (cm   in)	Packages   Type
NA   NA	1   CARTON BOX
Height (cm   in)	Total Volume (m³)
NA   NA	0,012
Width (cm   in)	Total Weight (kg   lbs)
NA   NA	3,00   6,61
Weight (kg   lbs)	MOQ
2,00   4,41	1

REAX WALLBAR HOUSING - 3 PACK  
RX1470

SATELLITES NOT INCLUDED



TECHNICAL SPECS	SHIPPING INFORMATION
Depth (cm   in)	Packages   Type
10,00   3,94	1   CARTON BOX
Height (cm   in)	Total Volume (m³)
28,00   11,02	0,013
Width (cm   in)	Total Weight (kg   lbs)
19,00   7,48	4,00   8,82
Weight (kg   lbs)	MOQ
1,00   2,20	1

REAX STRAP HOUSING - 3 PACK  
RX1471

SATELLITES NOT INCLUDED

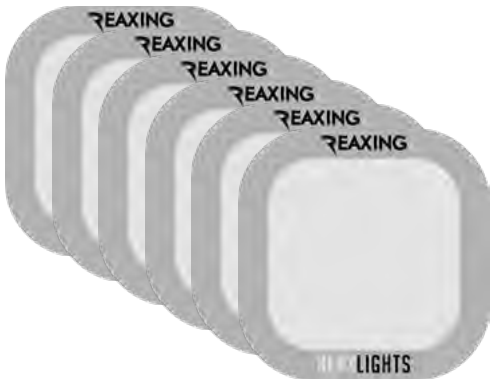


TECHNICAL SPECS	SHIPPING INFORMATION
Depth (cm   in)	Packages   Type
4,00   1,57	1   CARTON BOX
Height (cm   in)	Total Volume (m³)
19,00   7,48	0,006
Width (cm   in)	Total Weight (kg   lbs)
19,00   7,48	2,00   4,41
Weight (kg   lbs)	MOQ
0,50 1,10	1

REAX MARKER - MAGNETIC - 6 PACK

RX1407

FOR METAL SURFACES

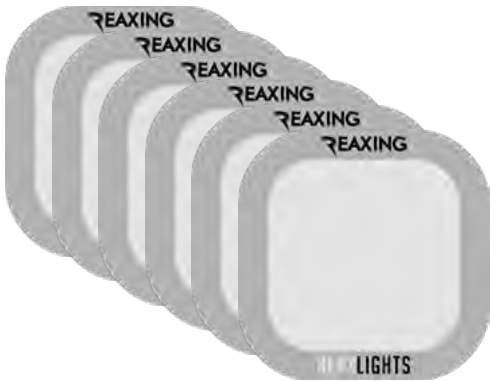


TECHNICAL SPECS	SHIPPING INFORMATION
Depth (cm   in)	Packages   Type
NA   NA	1   CARTON BOX
Height (cm   in)	Total Volume (m³)
21,00   8,27	0,006
Width (cm   in)	Total Weight (kg   lbs)
21,00   8,27	2,00   4,41
Weight (kg   lbs)	MOQ
NA   NA	1

REAX MARKER - STICKER - 6 PACK

RX1406

FOR FLOOR



TECHNICAL SPECS	SHIPPING INFORMATION
Depth (cm   in)	Packages   Type
NA   NA	1   CARTON BOX
Height (cm   in)	Total Volume (m³)
21,00   8,27	0,006
Width (cm   in)	Total Weight (kg   lbs)
21,00   8,27	2,00   4,41
Weight (kg   lbs)	MOQ
NA   NA	1

REAX MARKER - POKET - 3 PACK

RX1400

FOR WALL  
SATELLITES NOT INCLUDED

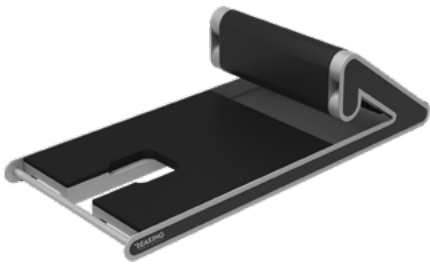


TECHNICAL SPECS	SHIPPING INFORMATION
Depth (cm   in)	Packages   Type
4,00   1,57	1   CARTON BOX
Height (cm   in)	Total Volume (m³)
19,00   7,48	0,006
Width (cm   in)	Total Weight (kg   lbs)
19,00   7,48	2,00   4,41
Weight (kg   lbs)	MOQ
0,50 1,10	1



REAX STAND UP BENCH - 1

RX1543



TECHNICAL SPECS	SHIPPING INFORMATION
Length (cm   in)	Packages   Type
60,00   23,62	1   CARTON BOX
Height (cm   in)	Total Volume (m³)
64,00   25,20	0,450
Width (cm   in)	Total Weight (kg   lbs)
132,00   51,97	33,00   72,75
Weight (kg   lbs)	MOQ
32,00   70,55	1

REAX PLYO

RX1653



SATELLITES NOT INCLUDED

TECHNICAL SPECS	SHIPPING INFORMATION
Depth (cm   in)	Packages   Type
60,00   23,62	1   CARTON BOX
Height (cm   in)	Total Volume (m³)
45,00   17,72	0,224
Width (cm   in)	Total Weight (kg   lbs)
75,00   29,53	36,00   79,37
Weight (kg   lbs)	MOQ
35,00   77,16	1





REAX ALUX STORAGE - 150 FIXED

RX1654

FLOOR FIXING NEEDED



TECHNICAL  
SPECS

Depth (cm | in)

30,00 | 11,81

Height (cm | in)

258,00 | 101,57

Width (cm | in)

153,00 | 60,24

Weight (kg | lbs)

145,00 | 319,67

SHIPPING  
INFORMATION

Packages | Type

5 | CARTON BOX

Total Volume (m³)

1,000

Total Weight (kg | lbs)

150,00 | 330,69

MOQ

1

REAX ALUX STORAGE - 300 FIXED

RX1655

FLOOR FIXING NEEDED



TECHNICAL  
SPECS

Depth (cm | in)

30,00 | 11,81

Height (cm | in)

258,00 | 101,57

Width (cm | in)

303,00 | 119,29

Weight (kg | lbs)

250,00 | 551,16

SHIPPING  
INFORMATION

Packages | Type

8 | CARTON BOX

Total Volume (m³)

1,480

Total Weight (kg | lbs)

258,00 | 568,79

MOQ

1



REAX ALUX STORAGE - 450 FIXED

RX1656

FLOOR FIXING NEEDED



TECHNICAL  
SPECS

Depth (cm | in)

30,00 | 11,81

Height (cm | in)

258,00 | 101,57

Width (cm | in)

453,00 | 178,35

Weight (kg | lbs)

355,00 | 782,64

SHIPPING  
INFORMATION

Packages | Type

11 | CARTON BOX

Total Volume (m³)

2,000

Total Weight (kg | lbs)

366,00 | 806,89

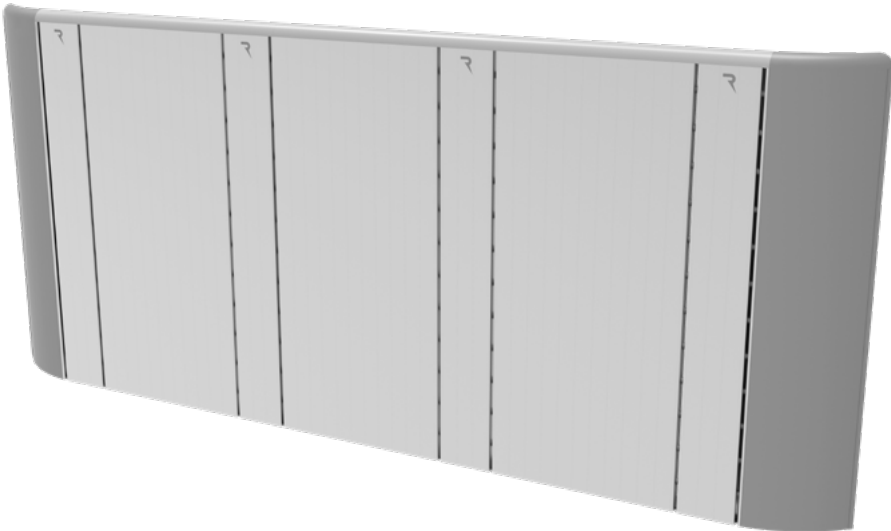
MOQ

1

REAX ALUX STORAGE - 600 FIXED

RX1657

FLOOR FIXING NEEDED



TECHNICAL  
SPECS

Depth (cm | in)

30,00 | 11,81

Height (cm | in)

258,00 | 101,57

Width (cm | in)

603,00 | 237,40

Weight (kg | lbs)

460,00 | 1014,13

SHIPPING  
INFORMATION

Packages | Type

14 | CARTON BOX

Total Volume (m³)

2,450

Total Weight (kg | lbs)

474,00 | 1044,99

MOQ

1

## SHELF 1 - 105 RX1511

SHELF 1 - 105 CAN CONTAIN UP TO:  
3 PAIRS OF REAX FLUILIFT DISK  
BOUNCE/CLASSIC



### TECHNICAL SPECS

Depth (cm | in)

52,00 | 20,47

Height (cm | in)

73,00 | 28,74

Width (cm | in)

84,00 | 33,07

Weight (kg | lbs)

23,00 | 50,71

### SHIPPING INFORMATION

Packages | Type

1 | CARTON BOX

Total Volume (m³)

0,330

Total Weight (kg | lbs)

24,00 | 52,91

MOQ

1

## SHELF 2 - MINI RX1658

SHELF 2 - MINI CAN CONTAIN:  
FLUIBALL/ FLUIKETTLE/ FLUIPUMP  
BALL



### TECHNICAL SPECS

Depth (cm | in)

59,00 | 23,23

Height (cm | in)

31,00 | 12,20

Width (cm | in)

37,00 | 14,57

Weight (kg | lbs)

11,00 | 24,25

### SHIPPING INFORMATION

Packages | Type

2 | CARTON BOX

Total Volume (m³)

0,140

Total Weight (kg | lbs)

24,00 | 52,91

MOQ

1

## SHELF 4 - MINI RX1659

SHELF 4 - MINI CAN CONTAIN:  
REAX CHAIN/ REAX FLUILIFT  
BUNGEE/ REAX BAR



### TECHNICAL SPECS

Depth (cm | in)

55,00 | 21,65

Height (cm | in)

31,00 | 12,20

Width (cm | in)

37,00 | 14,57

Weight (kg | lbs)

11,00 | 24,25

### SHIPPING INFORMATION

Packages | Type

2 | CARTON BOX

Total Volume (m³)

0,140

Total Weight (kg | lbs)

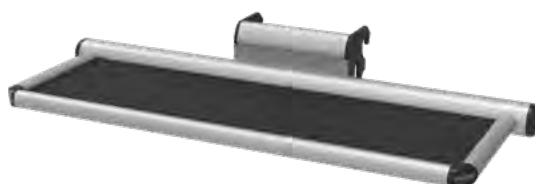
24,00 | 52,91

MOQ

1

## SHELF 2 - 145 RX1514

SHELF 2 - 145 CAN CONTAIN UP TO:  
12 X FLUIKETTLE/ 7 X FLUIBALL 26 /  
12 X FLUIPUMPBALL



### TECHNICAL SPECS

Depth (cm | in)

63,00 | 24,80

Height (cm | in)

31,00 | 12,20

Width (cm | in)

145,00 | 57,09

Weight (kg | lbs)

21,00 | 46,30

### SHIPPING INFORMATION

Packages | Type

1 | CARTON BOX

Total Volume (m³)

0,100

Total Weight (kg | lbs)

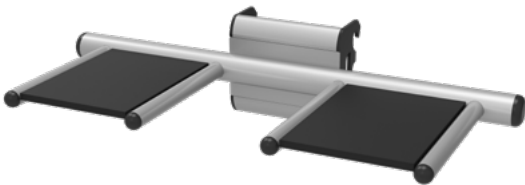
22,00 | 48,50

MOQ

1

SHELF 3 - 145  
RX1515

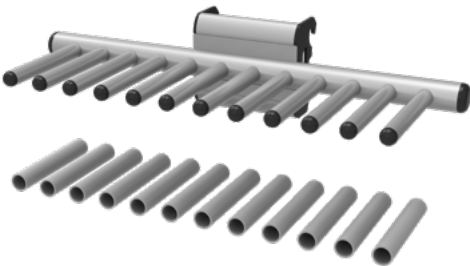
SHELF 3 - 145 CAN CONTAIN UP TO:  
2 X BALANCE TRAINER / 8 X I-FLOOR  
TILES



TECHNICAL SPECS	SHIPPING INFORMATION
Depth (cm   in)	Packages   Type
70,00   27,56	1   CARTON BOX
Height (cm   in)	Total Volume (m³)
31,00   12,20	0,100
Width (cm   in)	Total Weight (kg   lbs)
145,00   57,09	20,00   44,09
Weight (kg   lbs)	MOQ
10,00   22,05	1

SHELF 4 - 145  
RX1660

SHELF 4 - 145 CAN CONTAIN:  
REAX CHAIN/ REAX FLUILIFT  
BUNGEE/ REAX BAR /FLUIPUMP



TECHNICAL SPECS	SHIPPING INFORMATION
Depth (cm   in)	Packages   Type
56,00   22,05	1   CARTON BOX
Height (cm   in)	Total Volume (m³)
31,00   12,20	0,100
Width (cm   in)	Total Weight (kg   lbs)
145,00   57,09	26,00   57,32
Weight (kg   lbs)	MOQ
25,00   55,12	1

SHELF 5 - 145  
RX1517

SHELF 5 - 145 CAN CONTAIN UP TO:  
2 X FLUIBALL 65



TECHNICAL SPECS	SHIPPING INFORMATION
Depth (cm   in)	Packages   Type
68,00   26,77	1   CARTON BOX
Height (cm   in)	Total Volume (m³)
31,00   12,20	0,100
Width (cm   in)	Total Weight (kg   lbs)
145,00   57,09	20,00   44,09
Weight (kg   lbs)	MOQ
19,00   41,89	1

SHELF 6 - 145  
RX1552

SHELF 6 - CAN CONTAIN UP TO: 16  
X MAT 120



TECHNICAL SPECS	SHIPPING INFORMATION
Depth (cm   in)	Packages   Type
69,00   27,17	1   CARTON BOX
Height (cm   in)	Total Volume (m³)
31,00   12,20	0,100
Width (cm   in)	Total Weight (kg   lbs)
145,00   57,09	20,00   44,09
Weight (kg   lbs)	MOQ
19,00   41,89	1

## CONFIGURATION 1

THE CONFIGURATION SHOWS:

3X RX1514 - SHELF 2 - 145  
 1X RX1517 - SHELF 5 - 145  
 16X REAX FLUIBALL 16  
 9X REAX FLUIBALL 26  
 6X REAX FLUIBALL 30  
 1X RX1183 - REAX FLUIBALL 55  
 1X RX1184 - REAX FLUIBALL 65



## CONFIGURATION 2

THE CONFIGURATION SHOWS:

1X RX1514 - SHELF 2 - 145  
 1X RX1660 - SHELF 4 - 145  
 12X REAX FLUIKETTLE  
 12X REAX FLUIPUMP



## CONFIGURATION 3

THE CONFIGURATION SHOWS:

2X RX1660 - SHELF 4 - 145  
 9X RX1198 - REAX CHAIN FIVE - CLUB MIX 4 PACK  
 6X RX1202 - REAX CHAIN TWO - CLUB MIX 3 PAIRS PACK



## CONFIGURATION 4

THE CONFIGURATION SHOWS:

2X RX1511 - SHELF 1 - 105  
 1X RX1660 - SHELF 4 - 145  
 6 PAIRS OF REAX FLUILIFT DISK  
 3 PAIRS OF REAX FLUILIFT BUNGEE  
 6X REAX BAR  
 6X RX1040 - CUSHION 50



## CONFIGURATION 5

THE CONFIGURATION SHOWS:

1X RX1514 - SHELF 2 - 145  
1X RX1660 - SHELF 4 - 145  
3X RX1198 - REAX CHAIN FIVE - CLUB MIX 4 PACK  
1X RX1202 - REAX CHAIN TWO - CLUB MIX 3 PAIRS PACK  
5X REAX FLUIBALL 26  
4X REAX FLUIKETTLE  
6X REAX FLUIPUMP



## CONFIGURATION 6

THE CONFIGURATION SHOWS:

1X RX1515 - SHELF 3 - 145  
1X RX1552 - SHELF 6 - 145  
16X RX1450 - MAT 120  
4X RX1053 - 3D FLOOR SHALLOW  
4X RX1054 - 3D FLOOR DEEP



# INSTALLATION SERVICES

## TEAM 1 WORKING DAYS SER003

TEAM 1 IS COMPOSED BY 1 PERSON RESPONSIBLE FOR THE SETUP OF THE REAXING PRODUCTS. THE TEAM CAN START THE INSTALLATION WITH THE HELP OF 1 ASSISTANT PROVIDED BY THE CUSTOMER FOR THE WHOLE DURATION OF THE PROCEDURE. IN CASE THE SETUP INCLUDES THE POSITIONING OF HEAVY PRODUCTS (SUCH AS REAX BOARD OR REAX BALANCE), 2 ADDITIONAL WORKERS WILL BE NEEDED (PROVIDED BY THE CUSTOMER) FOR THE WHOLE DURATION OF THE PROCEDURE.

FLAT FEE - EU LOCATIONS  
**SER011**

DAILY ALLOWANCE + TRANSFER  
EXPENSES WITHIN THE ITALIAN  
TERRITORY

FLAT FEE - NON - EU LOCATIONS  
**SER012**

DAILY ALLOWANCE + TRANSFER  
EXPENSES WITHIN THE ITALIAN  
TERRITORY



**FLAT FEE INCLUDES TIMING AND COSTS OF ROUND TRIP TRANSFERS FROM OUR HEADQUARTER TO THE AIRPORT WITHIN THE ITALIAN TERRITORY.**

**EXPENSES CHARGED TO THE DISTRIBUTOR/CLIENT ARE:**

- ROUND TRIP FLIGHTS;
- ROUND TRIP TRANSFER FROM THE AIRPORT TO THE ACCOMMODATION SITE;
- TRANSFERS FROM THE ACCOMMODATION SITE TO THE SETUP LOCATION;
- ROOM AND BOARD: MEALS (BREAKFAST, LUNCH AND DINNER) AND ACCOMMODATION

## TEAM 1 NIGHT SHIFT AND/OR NON-WORKING DAYS SER004

TEAM 1 IS COMPOSED BY 1 PERSON RESPONSIBLE FOR THE SETUP OF THE REAXING PRODUCTS. THE TEAM CAN START THE INSTALLATION WITH THE HELP OF 1 ASSISTANT PROVIDED BY THE CUSTOMER FOR THE WHOLE DURATION OF THE PROCEDURE. IN CASE THE SETUP INCLUDES THE POSITIONING OF HEAVY PRODUCTS (SUCH AS REAX BOARD OR REAX BALANCE), 2 ADDITIONAL WORKERS WILL BE NEEDED (PROVIDED BY THE CUSTOMER) FOR THE WHOLE DURATION OF THE PROCEDURE.

FLAT FEE - EU LOCATIONS  
**SER011**

DAILY ALLOWANCE + TRANSFER  
EXPENSES WITHIN THE ITALIAN  
TERRITORY

FLAT FEE - NON - EU LOCATIONS  
**SER012**

DAILY ALLOWANCE + TRANSFER  
EXPENSES WITHIN THE ITALIAN  
TERRITORY



**FLAT FEE INCLUDES TIMING AND COSTS OF ROUND TRIP TRANSFERS FROM OUR HEADQUARTER TO THE AIRPORT WITHIN THE ITALIAN TERRITORY.**

**EXPENSES CHARGED TO THE DISTRIBUTOR/CLIENT ARE:**

- ROUND TRIP FLIGHTS;
- ROUND TRIP TRANSFER FROM THE AIRPORT TO THE ACCOMMODATION SITE;
- TRANSFERS FROM THE ACCOMMODATION SITE TO THE SETUP LOCATION;
- ROOM AND BOARD: MEALS (BREAKFAST, LUNCH AND DINNER) AND ACCOMMODATION

## TEAM 2 WORKING DAYS SER005

TEAM 2 IS COMPOSED BY 1 PERSON RESPONSIBLE FOR THE INSTALLATION OF THE REAXING PRODUCTS AND 1 ASSISTANT. IN CASE THE SETUP INCLUDES THE POSITIONING OF HEAVY PRODUCTS (SUCH AS REAX BOARD OR REAX BALANCE) 2 ADDITIONAL WORKERS WILL BE NEEDED (PROVIDED BY THE CUSTOMER) FOR THE WHOLE DURATION OF THE PROCEDURE.

FLAT FEE - EU LOCATIONS  
**SER013**

DAILY ALLOWANCE + TRANSFER  
EXPENSES WITHIN THE ITALIAN  
TERRITORY

FLAT FEE - NON - EU LOCATIONS  
**SER014**

DAILY ALLOWANCE + TRANSFER  
EXPENSES WITHIN THE ITALIAN  
TERRITORY



**FLAT FEE INCLUDES TIMING AND COSTS OF ROUND TRIP TRANSFERS FROM OUR HEADQUARTER TO THE AIRPORT WITHIN THE ITALIAN TERRITORY.**

**EXPENSES CHARGED TO THE DISTRIBUTOR/CLIENT ARE:**

- ROUND TRIP FLIGHTS;
- ROUND TRIP TRANSFER FROM THE AIRPORT TO THE ACCOMMODATION SITE;
- TRANSFERS FROM THE ACCOMMODATION SITE TO THE SETUP LOCATION;
- ROOM AND BOARD: MEALS (BREAKFAST, LUNCH AND DINNER) AND ACCOMMODATION

## TEAM 2 NIGHT SHIFT AND/OR NON-WORKING DAYS SER006

TEAM 2 IS COMPOSED BY 1 PERSON RESPONSIBLE FOR THE INSTALLATION OF THE REAXING PRODUCTS AND 1 ASSISTANT. IN CASE THE SETUP INCLUDES THE POSITIONING OF HEAVY PRODUCTS (SUCH AS REAX BOARD OR REAX BALANCE) 2 ADDITIONAL WORKERS WILL BE NEEDED (PROVIDED BY THE CUSTOMER) FOR THE WHOLE DURATION OF THE PROCEDURE.

FLAT FEE - EU LOCATIONS  
**SER013**

DAILY ALLOWANCE + TRANSFER  
EXPENSES WITHIN THE ITALIAN  
TERRITORY

FLAT FEE - NON - EU LOCATIONS  
**SER014**

DAILY ALLOWANCE + TRANSFER  
EXPENSES WITHIN THE ITALIAN  
TERRITORY



**FLAT FEE INCLUDES TIMING AND COSTS OF ROUND TRIP TRANSFERS FROM OUR HEADQUARTER TO THE AIRPORT WITHIN THE ITALIAN TERRITORY.**

**EXPENSES CHARGED TO THE DISTRIBUTOR/CLIENT ARE:**

- ROUND TRIP FLIGHTS;
- ROUND TRIP TRANSFER FROM THE AIRPORT TO THE ACCOMMODATION SITE;
- TRANSFERS FROM THE ACCOMMODATION SITE TO THE SETUP LOCATION;
- ROOM AND BOARD: MEALS (BREAKFAST, LUNCH AND DINNER) AND ACCOMMODATION

## REAX TRAINING METHOD “IN HOUSE” SER007-RTM

A ONE-DAY EDUCATION COURSE THAT TAKES PLACE IN A LOCATION SELECTED BY THE CLIENT. THE CLIENT INDICATES A DATE THAT HAS TO BE APPROVED BY REAXING.  
FOR FURTHER INFORMATION CONCERNING DURATION, TYPOLOGIES AND MAX NUMBER OF PARTICIPANTS, PLEASE VISIT [WWW.REAXING.COM](http://WWW.REAXING.COM)



### ADDITIONAL EXPENSES

#### SER017

##### INCLUDE:

- ROUND TRIP TRANSPORTATION.
- ROUND TRIP TRANSFER FROM THE AIRPORT TO THE ACCOMMODATION SITE;
- TRANSFERS FROM THE ACCOMMODATION SITE TO THE SETUP/TRAINING LOCATION;
- ROOM AND BOARD: MEALS (BREAKFAST, LUNCH AND DINNER) AND ACCOMODATION
- VISA & TRAVEL PERMITS.

### TRAVELING DAY

#### SER021

##### DAILY ALLOWANCE

## REAX TRAINING METHOD “IN OUR LOCATION” SER009-RTM

A ONE-DAY EDUCATION COURSE THAT TAKES PLACE IN A LOCATION SELECTED BY REAXING. THE DATE OF THE COURSE IS PLANNED BY REAXING.  
FOR FURTHER INFORMATION CONCERNING DURATION, TYPOLOGIES AND MAX NUMBER OF PARTICIPANTS, PLEASE VISIT [WWW.REAXING.COM](http://WWW.REAXING.COM)



## REAX LIGHTS “IN HOUSE” SER007-LGH

A ONE-DAY EDUCATION COURSE THAT TAKES PLACE IN A LOCATION SELECTED BY THE CLIENT. THE CLIENT INDICATES A DATE THAT HAS TO BE APPROVED BY REAXING.  
FOR FURTHER INFORMATION CONCERNING DURATION, TYPOLOGIES AND MAX NUMBER OF PARTICIPANTS, PLEASE VISIT [WWW.REAXING.COM](http://WWW.REAXING.COM)



### ADDITIONAL EXPENSES

#### SER017

##### INCLUDE:

- ROUND TRIP TRANSPORTATION.
- ROUND TRIP TRANSFER FROM THE AIRPORT TO THE ACCOMMODATION SITE;
- TRANSFERS FROM THE ACCOMMODATION SITE TO THE SETUP/TRAINING LOCATION;
- ROOM AND BOARD: MEALS (BREAKFAST, LUNCH AND DINNER) AND ACCOMODATION
- VISA & TRAVEL PERMITS.

### TRAVELING DAY

#### SER021

##### DAILY ALLOWANCE

## REAX LIGHTS “IN OUR LOCATION” SER009-LGH

A ONE-DAY EDUCATION COURSE THAT TAKES PLACE IN A LOCATION SELECTED BY REAXING. THE DATE OF THE COURSE IS PLANNED BY REAXING.  
FOR FURTHER INFORMATION CONCERNING DURATION, TYPOLOGIES AND MAX NUMBER OF PARTICIPANTS, PLEASE VISIT [WWW.REAXING.COM](http://WWW.REAXING.COM)





# PROGRESSIVE ITEM CODE

SECTION	CODE	DESCRIPTION	PAGE
REAX LIGHTS	RX1005-BK	REAX LIGHTS -PROFESSIONAL 6 - STUDIO	HP - 11
REAX LIGHTS	RX1006-BK	REAX LIGHTS -PRODFESSIONAL 12 - STUDIO	HP - 13
REAX LIGHTS	RX1273-BK	REAX LIGHTS - PERSONAL 6	HP - 9
REAX LIGHTS	RX1286-BK	REAX APPAREL (L/XL)	HP - 20
REAX LIGHTS	RX1286-GY	REAX APPAREL (S/M)	HP - 20
REAX LIGHTS	RX1397	TABLET	HP - 8
REAX LIGHTS	RX1397	TABLET	HP - 9
REAX LIGHTS	RX1397	TABLET	HP - 10
REAX LIGHTS	RX1397	TABLET	HP - 11
REAX LIGHTS	RX1397	TABLET	HP - 12
REAX LIGHTS	RX1397	TABLET	HP - 13
REAX LIGHTS	RX1400	REAX MARKER - POKET - 3 PACK	HP - 21
REAX LIGHTS	RX1401	IRON PANEL - 110-MINI	HP - 16
REAX LIGHTS	RX1402	IRON PANEL - 110	HP - 16
REAX LIGHTS	RX1406	REAX MARKER - STICKER - 6 PACK	HP - 21
REAX LIGHTS	RX1407	REAX MARKER - MAGNETIC - 6 PACK	HP - 21
REAX RUN	RX1408	REAX RUN - PRO	HP - 5
REAX RUN	RX1409	TABLET	HP - 5
REAX BOARD	RX1410	REAX BOARD 250	HP - 6
REAX BOARD	RX1411	SOFT MAT FOR BOARD 250	HP - 7
REAX BOARD	RX1412	REAX BOARD 125	HP - 6
REAX BOARD	RX1414	TABLET	HP - 7
REAX LIGHTS	RX1470	REAX WALLBAR HOUSING - 3 PACK	HP - 20
REAX LIGHTS	RX1471	REAX STRAP HOUSING - 3 PACK	HP - 20
REAX STORAGES	RX1511	SHELF 1 - 105	HP - 26
REAX STORAGES	RX1514	SHELF 2 - 145	HP - 26
REAX STORAGES	RX1515	SHELF 3 - 145	HP - 27
REAX STORAGES	RX1517	SHELF 5 - 145	HP - 27
REAX LIGHTS	RX1543	REAX STAND UP BENCH - 1	HP - 22
REAX STORAGES	RX1552	SHELF 6 - 145	HP - 27
REAX LIGHTS	RX1638-BK	REAX LIGHTS - PERSONAL 3	HP - 8
REAX BOARD	RX1641	REAX BOARD - CONTROL STATION - 4	HP - 7
REAX LIGHTS	RX1653	REAX PLYO	HP - 22
REAX STORAGES	RX1654	REAX ALUX STORAGE - 150 FIXED	HP - 24
REAX STORAGES	RX1655	REAX ALUX STORAGE - 300 FIXED	HP - 24
REAX STORAGES	RX1656	REAX ALUX STORAGE - 450 FIXED	HP - 25
REAX STORAGES	RX1657	REAX ALUX STORAGE - 600 FIXED	HP - 25
REAX STORAGES	RX1658	SHELF 2 - MINI	HP - 26
REAX STORAGES	RX1659	SHELF 4 - MINI	HP - 26
REAX STORAGES	RX1660	SHELF 4 - 145	HP - 27
REAX RUN	RX1661	UNIVERSAL TABLET STATION	HP - 5
REAX BOARD	RX1661	UNIVERSAL TABLET STATION	HP - 7
REAX LIGHTS	RX1661	UNIVERSAL TABLET STATION	HP - 8
REAX LIGHTS	RX1661	UNIVERSAL TABLET STATION	HP - 9
REAX LIGHTS	RX1661	UNIVERSAL TABLET STATION	HP - 10



SECTION	CODE	DESCRIPTION	PAGE
REAX LIGHTS	RX1661	UNIVERSAL TABLET STATION	HP - 11
REAX LIGHTS	RX1661	UNIVERSAL TABLET STATION	HP - 12
REAX LIGHTS	RX1661	UNIVERSAL TABLET STATION	HP - 13
REAX LIGHTS	RX1662-BK	REAX LIGHTS - PROFESSIONAL 6 - PT	HP - 10
REAX LIGHTS	RX1663-BK	REAX LIGHTS - PROFESSIONAL 12 - PT	HP - 12
REAX LIGHTS	RX1664	FLOOR PANEL - 110	HP - 17
REAX LIGHTS	RX1665	INDUCTION CHARGER - BASIC	HP - 17
REAX LIGHTS	RX1666	INDUCTION CHARGER - PRO	HP - 17
REAX LIGHTS	RX1667	REAX STATION - 350 EXECUTIVE	HP - 14
REAX LIGHTS	RX1668	REAX STATION - 350 EXECUTIVE - WITH FLOOR	HP - 14
REAX LIGHTS	RX1669	REAX STATION - 350 PREMIUM	HP - 15
REAX LIGHTS	RX1670	REAX STATION - 350 PREMIUM - WITH FLOOR	HP - 15
REAX SERVICES & COURSES	SER003	TEAM 1 WORKING DAYS	HP - 30
REAX SERVICES & COURSES	SER004	TEAM 1 NIGHT SHIFT AND/OR NON WORKING DAYS	HP - 30
REAX SERVICES & COURSES	SER005	TEAM 2 WORKING DAYS	HP - 30
REAX SERVICES & COURSES	SER006	TEAM 2 NIGHT SHIFT AND/OR NON WORKING DAYS	HP - 30
REAX SERVICES & COURSES	SER007-LGH	REAX LIGHTS "IN HOUSE"	HP - 31
REAX SERVICES & COURSES	SER007-RTM	REAX TRAINING METHOD "IN HOUSE"	HP - 31
REAX SERVICES & COURSES	SER009-LGH	REAX LIGHTS "IN HOUSE"	HP - 31
REAX SERVICES & COURSES	SER009-RTM	REAX TRAINING METHOD "IN OUR LOCATION"	HP - 31
REAX SERVICES & COURSES	SER011	FLAT FEE - EU LOCATIONS	HP - 30
REAX SERVICES & COURSES	SER012	FLAT FEE - NON EU LOCATIONS	HP - 30
REAX SERVICES & COURSES	SER013	FLAT FEE - EU LOCATIONS	HP - 30
REAX SERVICES & COURSES	SER014	FLAT FEE - NON EU LOCATIONS	HP - 30
REAX SERVICES & COURSES	SER017	ADDITIONAL EXPENSES FOR TEAM	HP - 31
REAX SERVICES & COURSES	SER021	TRAVELLING DAY	HP - 31



[WWW.REAXING.COM](http://WWW.REAXING.COM)

